

15 December 2020



Mark Reynolds
SINSW
c/- Elise Watson
MBB Group
Level 4, 73 York Street
Sydney NSW 2000

Dear Elise,

1. Wilton Public School – Response to Council RFI

ptc. has been engaged by School Infrastructure New South Wales (SINSW) to prepare a letter to respond to Council's Request for Information for the expansion of Wilton Public School. Specifically, this letter addresses the following comments issued by Wollondilly Shire Council on 12th November 2020:

Engineering –

The following information has been requested by the engineers:

Provide plans for parking and other proposed changes (restrictions) as per Traffic report. A summary sheet is also required for the proposed changes. This information is to be provided to the Local Traffic Committee for endorsement/consideration.

Provide RMS comments regarding changes for pedestrian refuge and crossing.

The following sections outline ptc.'s response to Council's request for information.

1.1 Existing On-street Parking Controls

The existing on-street parking controls on Kenniff Street and Greenbridge Drive are illustrated in Figure 1, with an enlarged version in Attachment 1.

Currently, P5-minute parking (total 13 spaces) is provided on the eastern side of Kenniff Street and along the northern side of Greenbridge Drive. It is noted that the current on-street parking controls on Kenniff Street appear to have been updated to "P5-minute; 8am-9:30am and 2:30pm-4pm; School Days" since the Traffic Impact Assessment was previously issued on 25th March 2020. It is noted that the five on-street spaces at the northern end of Kenniff Street was previously unrestricted at the time the Traffic Impact Assessment was prepared.

There is also 1/2P Parking provided along Greenbridge Drive between the standard School Zone times "8am-9:30am and 2:30pm-4pm; School Days". This 30-minute time restriction allows parents to pick-up/drop-off younger students who may require someone to escort them to and from the school grounds.



Figure 1 - Existing On-street Parking Restrictions (as at 8th Dec 2020)

1.2 Proposed Amendments to On-street Parking Controls

As outlined in Section 9.1 of the Traffic Impact Assessment, the following changes to the on-street parking controls are requested:

- Kenniff Street** – implementation of 2P parking along the eastern side of Kenniff Street for visitor use. The existing P5-minute restriction is proposed to be converted to a combination of “P5-minute 8am-9:30am; 2:30pm-4pm; School Days” and “2P 9:30am-2:30pm; School Days”. This will allow visitors to utilise these spaces during the school day outside the hours of pick-up/drop-off operation. The two-hour time limit will facilitate turnover of these parking spaces and discourage long-term parkers from using the pick-up/drop-off zone during the morning and afternoon school peaks.
- Greenbridge Drive** – no changes to the existing on-street parking controls are proposed.

The proposed amendments are shown in Figure 2 and also included in Attachment 2.



Figure 2 – Proposed On-street Parking Restrictions

1.3 Pedestrian Refuge and School Crossing on Greenbridge Drive

It is noted that no alterations to the existing pedestrian refuges or school crossing on Greenbridge Drive are proposed, as per the Traffic Impact Assessment previously prepared by ptc. (dated 25th March 2020).

2. Conclusion

We trust that the information provided will assist Council in the assessment of the Development Application. Should you have any queries relating to a parking or traffic matter, please do not hesitate to contact our office on (02) 8920 0800.

Regards,

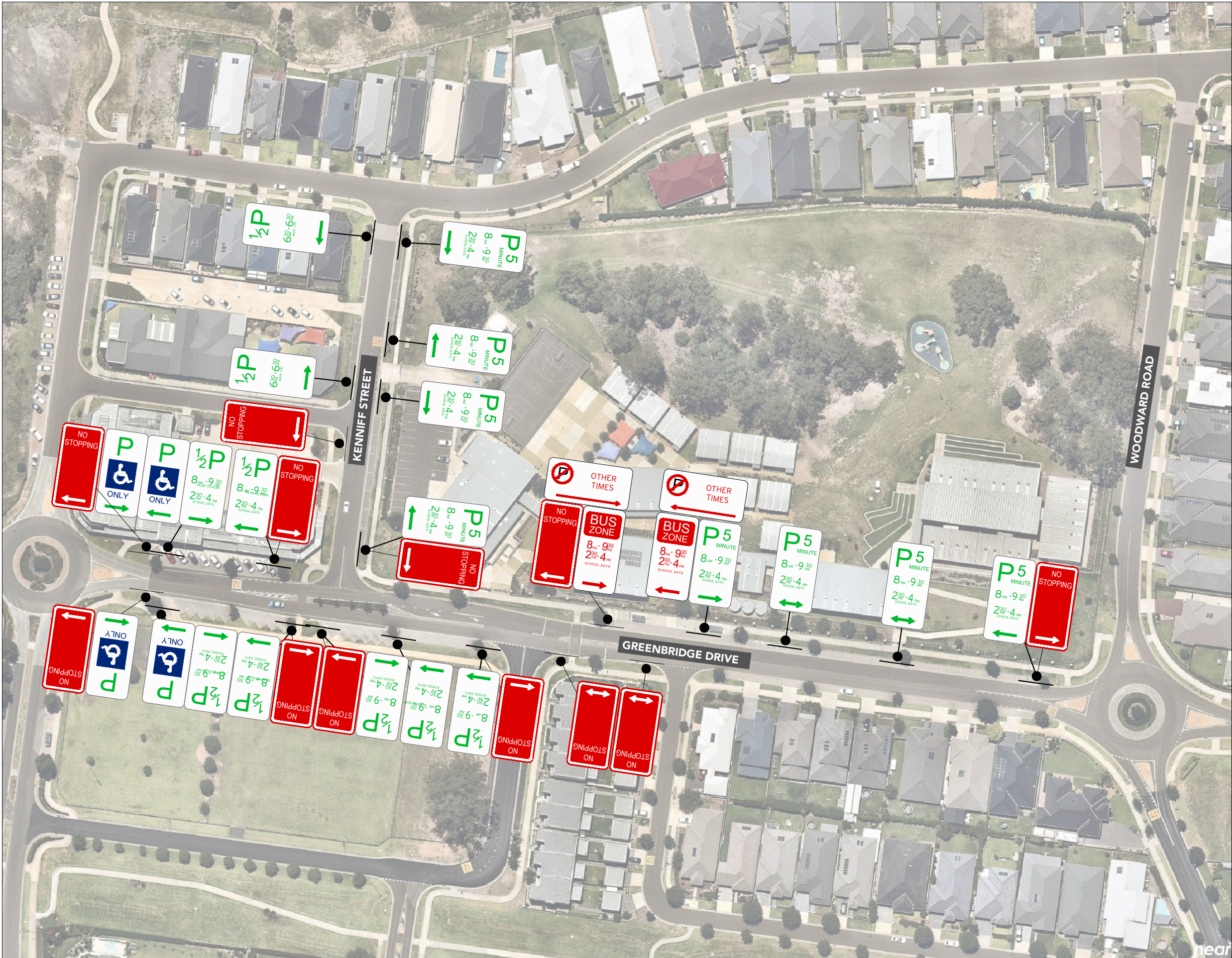
Henry Li
Traffic Engineer

On behalf of,

Steve Wellman
Project Director

Document Control: Prepared by HL on 15 December 2020. Reviewed by AM on 15 December 2020.

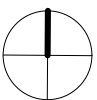
Attachment 1 - Existing On-street Parking Signage Plans



ptc.

Suite 502, 1 James Place,
North Sydney NSW 2060
t +61 2 8920 0800
ptcconsultants.co

REV	DATE	COMMENT	DRAWN	REVIEWED	REV	DATE	COMMENT	DRAWN	REVIEWED
3	09/12/20	COUNCIL RFI	HL	AM					
2	-	NOT ISSUED	-	-					
1	19/07/19	FOR INFORMATION	JJ	FL					



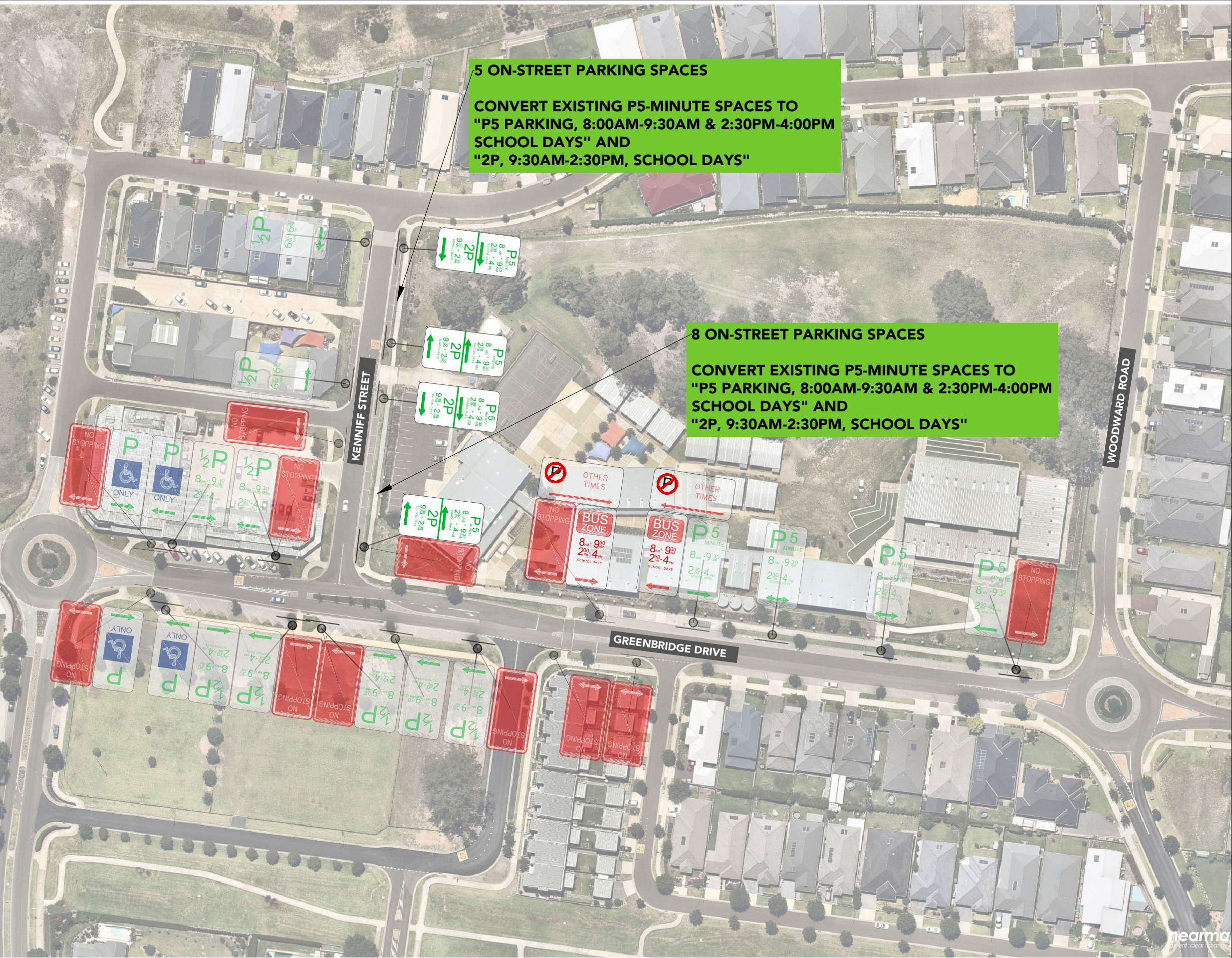
PROJECT:
WILTON PUBLIC SCHOOL
EXPANSION

DRAWING TITLE:
**EXISTING ON-STREET PARKING
SIGNAGE**
KENIFF STREET & GREENBRIDGE
DRIVE

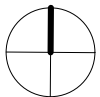
CLIENT: SINSW
DRG. #: SP-001
PROJECT #: 2622E
SCALE: NTS

REV: 3

Attachment 2 - Proposed On-street Parking Signage Plans



REV	DATE	COMMENT	DRAWN	REVIEWED	REV	DATE	COMMENT	DRAWN	REVIEWED
3	09/12/20	COUNCIL RFI	HL	AM					
2	20/20/20	FOR INFORMATION	HL	SW					
1	19/07/19	FOR INFORMATION	JJ	FL					



PROJECT:
WILTON PUBLIC SCHOOL
EXPANSION

DRAWING TITLE:
**PROPOSED ON-STREET PARKING
RESTRICTIONS
KENNIFF STREET & GREENBRIDGE
DRIVE**

CLIENT: SINSW
DRG. #: SP-002
PROJECT #: 2622E
SCALE: NTS

REV: 3